



GET READY TO  
EXPERIENCE INNOVATION  
AND **FUTURE TECH**  
WITH A TRUE  
**MADE IN INDIA** BRAND



**MADE IN INDIA.**  
**MADE FOR INDIA.**

📧 [helpdesk@digisol.com](mailto:helpdesk@digisol.com)

☎ **1800 209 3444**

[www.digisol.com](http://www.digisol.com)

DIGISOL is a Subsidiary of Smartlink Holdings Limited

STRUCTURED CABLING SYSTEMS | FTTH SOLUTIONS | SWITCHING SOLUTIONS | WIRELESS SOLUTIONS



# ABOUT DIGISOL

Digisol believes in building a self-reliant India and the aim is to make India a fast-growing IT networking brand a force to reckon with. Spearheading Government's **Make in India** vision by supporting our country's prospect of an **"AATMANIRBHAR" Bharat**. Digisol, a brand that's known for its strong edifice of values and ethics, also provides high-quality products/services and expanding the possibilities.

Digisol has proven its capabilities in IT and has been digitally empowering businesses with its top-notch Networking solutions for over **3 decades**. Digisol offers a wide range of networking solutions like **Structured Cabling Systems (Copper & Fiber), FTTH, Switching and Wireless solutions**. Offering innovative made in India solutions that we proudly say **"Trusted Provider of IT Networking Solutions"** and it seems that the world is more than ready to embrace this vision, which is already set on a path to become a reality.

- ▶ 3 Decades of experience in manufacturing
- ▶ The plants are ISO 9001:2008, AS 9100:2009 and ISO 14001:2004 certified
- ▶ Consists of a total of 5 plants covering 140,000 Sq ft of production shop floor area with SMT and Through-hole Lines
- ▶ Process Capability of Manufacturing of RoHS Products
- ▶ Statistical Quality Assurance

# INDEX

## Digisol ConvergeX Range - Enterprise Structured Cabling Systems



### COPPER

☞ Solid Cables.....	05
☞ Keystones.....	06
☞ Patch Panels.....	07
☞ Patch Cords.....	08
☞ Industrial Field Plugs.....	09
☞ IP Rated Patch Cords.....	09



## Digisol Structured Cabling Systems



### COPPER

☞ Solid Cables.....	11
☞ Keystones.....	12
☞ Solderless Keystone.....	13
☞ Solderless Patch Panels.....	13
☞ Patch Panels.....	14
☞ Patch Cords.....	16

### Unloaded

☞ Face Plates.....	17
☞ Patch Panels.....	18
☞ Surface Mount Box.....	18
☞ Tools.....	18

### FIBER

☞ Cables.....	19
☞ Patch Cords.....	21
☞ Pigtailed.....	21
☞ LIUs.....	22
☞ Adapters.....	22

### FTTH

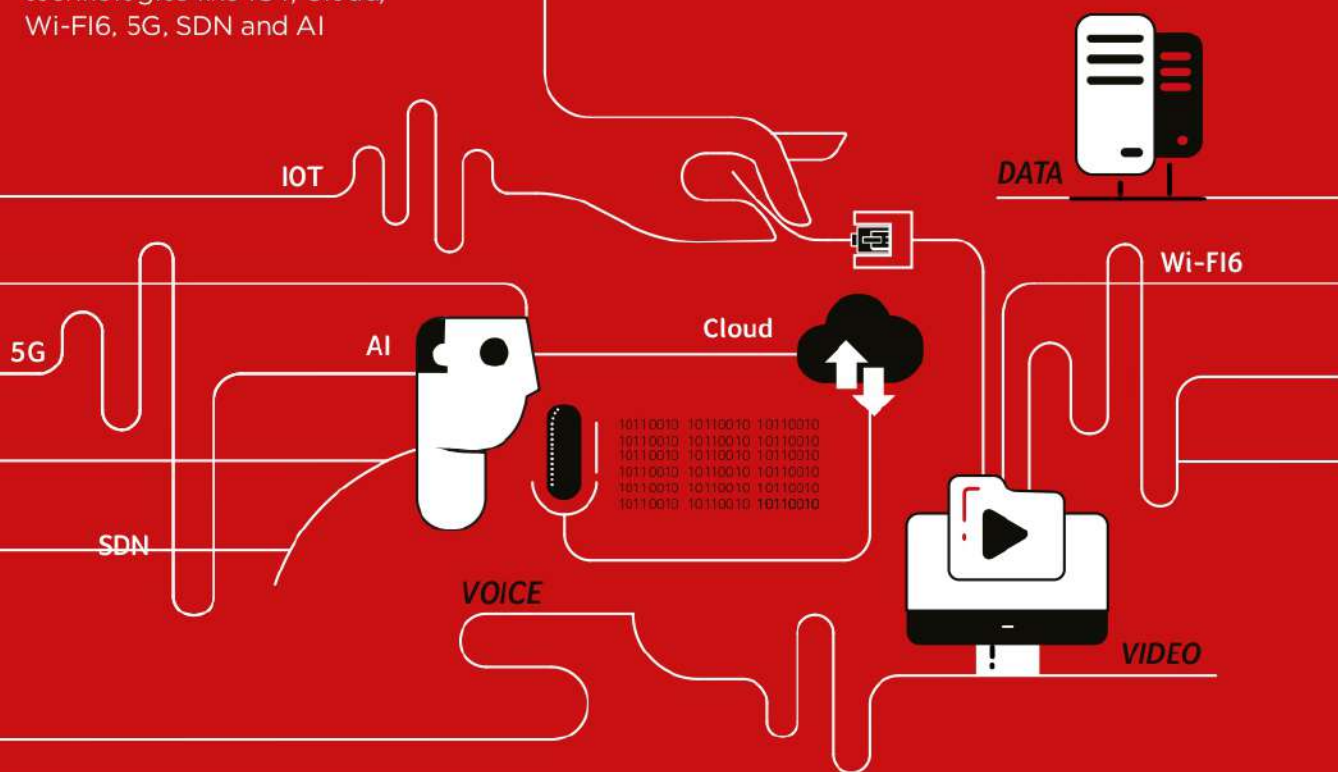
☞ SMC.....	23
☞ ODFs.....	23
☞ Splitters.....	23
☞ FDBs.....	24
☞ Connector.....	24
☞ Home Termination Box.....	24
☞ Drop Cable.....	24



More details on [www.digisol.com/convergeX](http://www.digisol.com/convergeX)

## VOICE VIDEO DATA

A future ready enterprise is equipped with a structured cabling infrastructure that converges voice, video, data at Xtreme performance for cutting edge, advanced technologies like IOT, Cloud, Wi-Fi6, 5G, SDN and AI



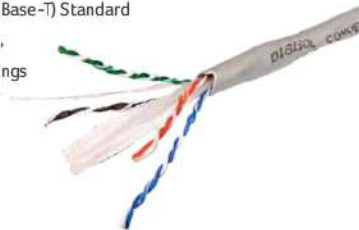
## Enterprise Structured Cabling

### COPPER **SOLID CABLES**

#### **SOLID CABLE, CAT6A UTP, 4 PAIR, 23 AWG, OVAL SHAPE, GREY, 305M**

Reduces Alien cross talk with unique oval design and pair locking cross-filler

- Designed for Horizontal
- Cabling Networks for Transmission of High Speed Data, Digital and Analog, Voice and Video Signals On Lans
- Supports Gigabit Ethernet (10 GBase-T) Standard
- Suitable for Noisy Environments, High EMI Interference Surroundings
- Complies to the Requirement of ANSI/TIA-568-C.2 and ISO/IEC 11801
- Bandwidth Performance Upto 600MHz



#### **SOLID CABLE, CAT6 UTP, 4 PAIR, 0.55 MM, GREY, 305M**

Higher bandwidth better performance

- For Data Centre Applications
- High bandwidth upto 600 MHz
- 4 Pair 23 AWG
- Available in FRPVC/LSZH jacket
- High speed transmission of Voice, Video and Data on LAN
- Also available in Blue colour



3 Decades of experience in manufacturing

# Enterprise Structured Cabling

## COPPER KEYSTONES

### SOLDERLESS KEYSTONES

#### CAT6 UTP SOLDERLESS KEYSTONE TOOLLESS

Efficient Rotation Design Tool Free, Press with Click to Terminate Wires

- Fully (360 degree) covered in 30 microns Gold plated Contact pins which are assembled with Solderless process
- Cable Holder with Strain Relief function **Fast, Easy, Reliable Termination**
- **Patented Toolless type** design with contact pins assembled with Solder-less Press-fit process
- **No oxidization** of Contact pins due to absence of soldering flux leading to longer life
- High impact **Polycarbonate Grade plastic**, UL-94V-0 rated
- Removable shutter option
- Supports both RJ11/RJ12 plug
- Plug Insertion Life : 750 Cycles minimum
- Available in Cat 5E, CAT 6 and CAT 6A

Contact pins assembled by **SOLDER-LESS PRESS-FIT PROCESS**

Toolless Termination with just a click!

**360° FULLY GOLD PLATED** Contact pins



### TOOLLESS CLASS EA/ CAT6A STP KEYSTONE JACK (AUTO PRESS FIT)

Auto press fit keystone with cable management

- RJ-45 Industrial Field plugs for field terminations
- CAT6A rated
- 360 degrees connection option available
- 8 different locking angle positions possible along the 360 degree path
- High impact flame retardant plastic
- PoE+ ready
- Accept Cable : #26~22 AWG solid/ 7 stranded wire



### TOOLLESS CLASS EA/ CAT6A UTP KEYSTONE JACK (AUTO PRESS FIT)

Auto press fit keystone with cable management

- RJ-45 Industrial Field plugs for field terminations
- CAT6A rated
- 360 degrees connection option available
- 8 different locking angle positions possible along the 360 degree path
- High impact flame retardant plastic
- PoE+ ready
- Accept Cable : #26~22 AWG solid/ 7 stranded wire



The plants are ISO 9001:2008, AS 9100:2009 and ISO 14001:2004 certified

# Enterprise Structured Cabling

## COPPER PATCH PANELS

### SOLDERLESS PATCH PANEL

24 PORT CAT6 UTP 90°

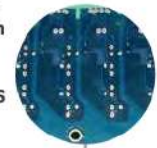
CAT 6 patch panel with CAT 6A performance

- Contacts pins assembled in **Patented PCBs** by Solder-less process leading to higher efficiency
- Flexible Square Contact pins, with 360 degree covered in 30 microns Gold plating, better for POE Application
- IDC accommodates **22~26 AWG** Stranded and Solid wires
- **No oxidation** of contact pins due to absence of soldering flux leading to longer life
- Higher performance with **better transmission** at electron level
- 6 Port Jack configuration specially designed & molded in Polycarbonate **Fire retardant material** and Removable Module Design
- **90 Degree Punch-Down design** for easy assembly on site
- Exceeds ANSI/TIA 568-C.2 standard, and supports 1000-BASE-T
- 1U Patch Panel to mount In any Standard Rack

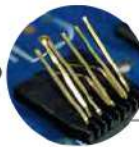
Top Entry Punch Down design with Removable Modules



Contact pins assembled on Patented PCBs by SOLDER-LESS PRESS-FIT PROCESS



360° FULLY GOLD PLATED Contact pins

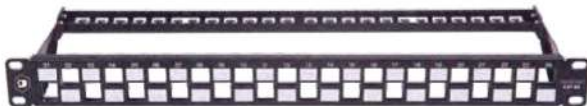


### STAGGERED PATCH PANEL

24 PORT CAT6A UTP 180°

Unique Staggered Design for better control on Alien cross talk

- Staggered ports for CAT6A patch panel to eliminate alien crosstalk
- Powder Coated body
- Efficient Cable management
- Ideal patch panel for high end Data Centre infrastructure



### 48 PORT 1U PATCH PANEL

CAT6A 48 PORT 1U UTP (LOADED)

Slim and Elegant design for Cat 6A performance

- 48 Port terminations in 1U Size
- Rack Mountable Aluminium body
- Efficient Rear Cable Management
- Perfect Solution for High Density Data Centre Applications



Consists of a total of 5 plants covering 140,000 Sq ft of production shop floor area with SMT and Through-hole Lines

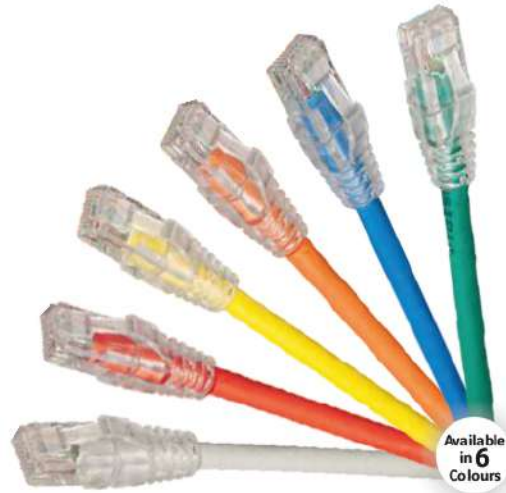
# Enterprise Structured Cabling

## COPPER PATCH CORDS

### CAT6 UTP, LSZH PATCH CORDS

Elegant aesthetic look with transparent boots and better transmission parameters

- Available in LSZH jacket- reduces Toxic gasses emitted during combustion
- RJ45, 8P8C, 3 pronged fork 50µ" gold plated contacts
- 100% factory tested
- Transparent boot cable assemblies
- Available in 5 different colors



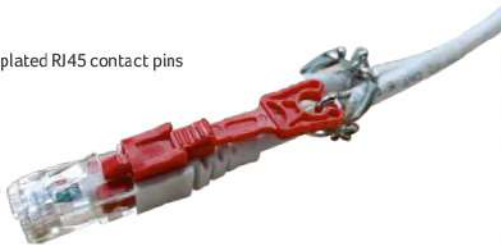
Available in 6 Colours



### LOCKABLE PATCH CORDS, CAT6, UTP, LSZH

Secured patch cord with locking key for data centre applications

- Comes with lock and key design for data centre security needs
- 24 AWG
- LSZH jacket
- 50 micron gold plated RJ45 contact pins



### ULTRA HD PATCH CORDS

Securing network with Ultra High density Patch cords

- UHD Patchcords with Pull-Back Tool
- Arrests data disconnections in high density patch panels due to mishandling.
- Patchcord Jacket is of LSZH material
- Fully (360 deg) plating on Contacts with 50 micron gold for best conductivity performance
- Suitable for Data Centre applications.



Process Capability of Manufacturing of RoHS Products



## Enterprise Structured Cabling

### COPPER INDUSTRIAL FIELD PLUGS

For DGC-RJFSCA-7TC industrial field plug, no cable manager is needed - patch cords can be routed in the design itself due to 8 different lockable positions

- Direct connectivity from switch to the end user's device
- PoE+ compliant
- Toolless termination
- Solderless Process used for assembly fo pins on PCBs leading to longer life and no oxidation due to absent flux



**DGC-RJFUCA-3T**  
INDUSTRIAL FIELD PLUGS CAT 6 UTP,  
3 PIECE, 180°, TOOLLESS, POE+



**DGC-RJFSCA-5T**  
INDUSTRIAL FIELD PLUGS CAT 6A STP,  
5 PIECE, 180°, TOOLLESS, POE+



**DGC-RJFSCA-7TC**  
INDUSTRIAL FIELD PLUGS CAT 6A STP,  
7 PIECE, 360°, TOOLLESS, POE+



### INDUSTRIAL PRODUCTS

#### IP RATED PATCH CORDS

Protect your connections with IE series products

- Available in Patchcords, Keystones and Cable Termination Modules
- IP Rated products
- Preferable for Field Applications where external factors are in force
- Also compliant for Chemical industries.



#### IP RATED PATCH CORDS

Protect your connections with IE series products

- Available in Patchcords, Keystones and Cable Termination Modules
- IP Rated products
- Preferable for Field Applications where external factors are in force
- Also compliant for Chemical industries.



Statistical Quality Assurance

# STRUCTURED CABLING SYSTEMS

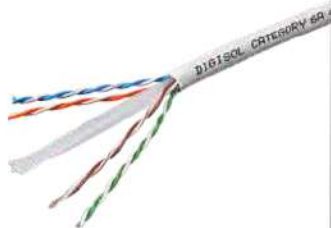


# Channel Structured Cabling

## COPPER SOLID CABLES

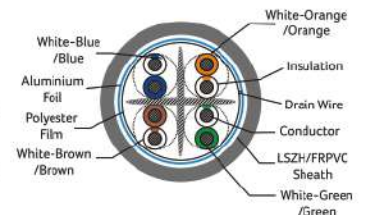
### CAT6A UTP, 4 PAIR, 23 AWG, GREY, 305M SOLID CABLE

- 4 Pair 23 AWG
- UTP FR-PVC Cable
- Horizontal Cabling Networks
- Transmission Of High Speed Data
- Digital and Analog
- Voice and Video Signals On LANs



### CAT6A FTP, 4 PAIR, 23 AWG, GREY, 305M SOLID CABLE

- 4 Pair 23 AWG
- FTP FR-PVC Cable
- Horizontal Cabling Networks
- Transmission Of High Speed Data
- Digital and Analog
- Voice and Video Signals On LANs



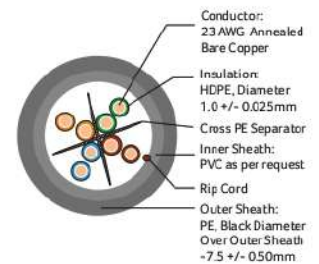
### CAT6 UTP, 4 PAIR, 23 AWG, GREY, 305M SOLID CABLE

- 4 Pair 23 AWG
- UTP FR-PVC Cable
- Horizontal Cabling Networks
- Transmission Of High Speed Data
- Digital and Analog
- Voice and Video Signals On LANs



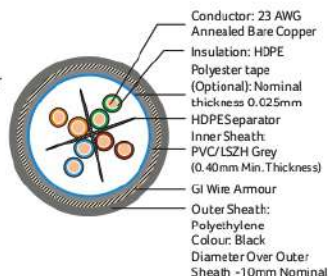
### CAT6 UTP, OUTDOOR DOUBLE JACKET, 4 PAIR, 23 AWG, BLACK, 305M SOLID CABLE

- 4 Pair 23 AWG
- UTP FR-PVC Cable
- Inner Sheath PVC & Outer Sheath Black PE
- Rugged Double sheath construction
- Horizontal Cabling Networks
- Transmission Of High Speed Data
- Digital and Analog Voice and Video Signals On LANs



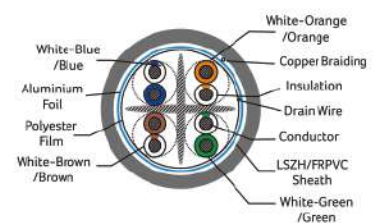
### CAT6 UTP, OUTDOOR ARMoured CABLE, 4 PAIR, 23 AWG, BLACK, 305M

- 4 Pair 23 AWG
- UTP FR-PVC Cable
- Inner Sheath PVC, ECCS Tape Armour With Outer Sheath Black PE
- Rugged Double sheath construction
- Horizontal Cabling Networks
- Transmission Of High Speed Data
- Digital and Analog Voice and Video Signals On LANs



### CAT6 SFTP, 4 PAIR, 23 AWG, GREY, 305M SOLID CABLE

- 4 Pair 23 AWG
- SFTP FR-PVC Cable
- Horizontal Cabling Networks
- Transmission Of High Speed Data
- Digital and Analog
- Voice and Video Signals On LANs



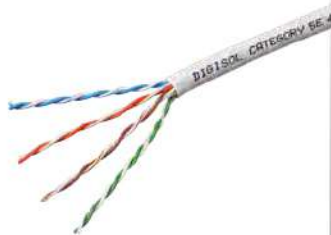
3 Decades of experience in manufacturing

# Channel Structured Cabling

## COPPER SOLID CABLES

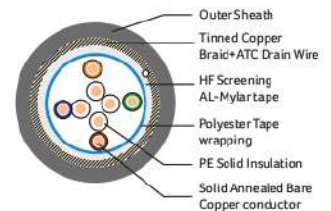
### CAT5E UTP, 4 PAIR, 24 AWG, GREY, 305M SOLID CABLE

- 4 Pair 23 AWG
- UTP FR-PVC Cable
- Horizontal Cabling Networks
- Transmission Of High Speed Data
- Digital and Analog
- Voice and Video Signals On LANs



### CAT5E SFTP, 4 PAIR, 24 AWG, GREY, 305M SOLID CABLE

- 4 Pair 24 AWG
- SFTP FR-PVC Cable
- Horizontal Cabling Networks
- Transmission Of High Speed Data
- Digital and Analog
- Voice and Video Signals On LANs



## COPPER KEYSTONES

### CAT6A FTP, 180°, TOOLLESS TYPE KEYSTONE

- Zinc-casted Shell Covered with the Nickel Plating
- Provide Outstanding Performance to Outside EMI • Secures Data
- Skilled Design on Jack and PCB
- High and Reliable Performance
- Ergonomic Design and Easy Termination
- Available in Cat5e and Cat6



### CAT6 FTP, 180°, TOOLLESS TYPE KEYSTONE

- Zinc-casted Shell Covered with the Nickel Plating
- Provide Outstanding Performance to Outside EMI • Secures Data
- Skilled Design on Jack and PCB
- High and Reliable Performance
- Ergonomic Design and Easy Termination
- Available in Cat5e and Cat6A



### CAT6 UTP, 180°, COLLAPSIBLE DOOR, PUNCH DOWN TYPE KEYSTONE

- Small & Exquisite form factor
- Skilled Design on Jack and PCB
- High and Reliable Performance
- Ergonomic Design & Easy Termination
- Support Both RJ11 and RJ12 Plug
- With Collapsible Shutter
- 25 microns Gold Plated Contact pins
- Available in Cat5e, Cat6 and Cat6A



### CAT6 UTP, WITHOUT DOOR KEYSTONE

- Small & Exquisite form factor
- Skilled Design on Jack and PCB
- High and Reliable Performance
- Ergonomic Design & Easy Termination
- Support Both RJ11 and RJ12 Plug
- 25 microns Gold Plated Contact pins
- Available in Cat5e, Cat6 and Cat6A



The plants are ISO 9001:2008, AS 9100:2009 and ISO 14001:2004 certified

# Channel Structured Cabling

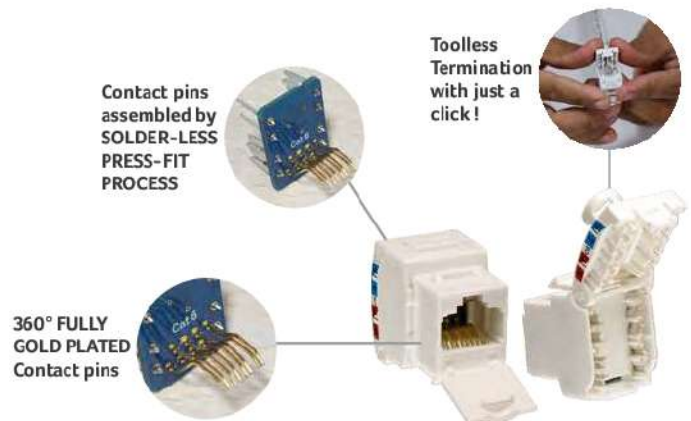
## COPPER KEYSTONES

### SOLDERLESS KEYSTONES

#### CAT6 UTP SOLDERLESS KEYSTONE TOOLLESS

Efficient Rotation Design Tool Free, Press with Click to Terminate Wires

- Fully (360 degree) covered in 30 microns Gold plated Contact pins which are assembled with Solderless process
- Cable Holder with Strain Relief function **Fast, Easy, Reliable Termination**
- **Patented Toolless type** design with contact pins assembled with Solder-less Press-fit process
- **No oxidization** of Contact pins due to absence of soldering flux leading to longer life
- High impact **Polycarbonate Grade plastic**, UL-94V-0 rated
- Removable shutter option
- Supports both RJ11/RJ12 plug
- Plug Insertion Life : 750 Cycles minimum
- Available in Cat 5E, CAT 6 and CAT 6A



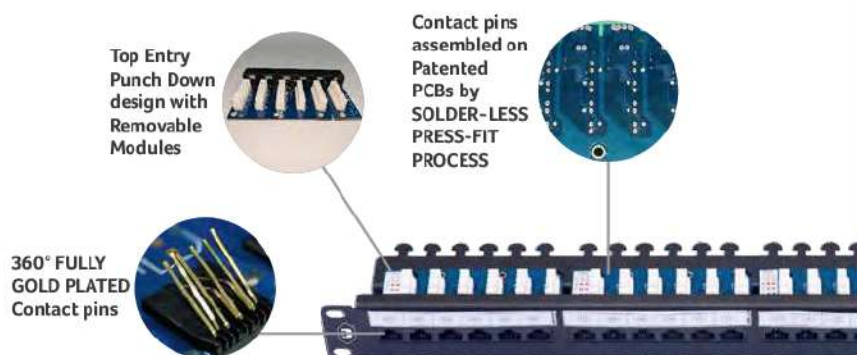
## COPPER PATCH PANELS

### SOLDERLESS PATCH PANEL

#### 24 PORT CAT6 UTP 90°

CAT6 patch panel with CAT6A performance

- Contacts pins assembled in **Patented PCBs** by Solder-less process leading to higher efficiency
- Flexible Square Contact pins, with 360 degree covered in 30 microns Gold plating, better for POE Application
- IDC accommodates **22~26 AWG** Stranded and Solid wires
- **No oxidization** of contact pins due to absence of soldering flux leading to longer life
- Higher performance with **better transmission** at electron level
- 6 Port Jack configuration specially designed & molded in Polycarbonate **Fire retardant material** and Removable Module Design
- **90 Degree Punch-Down design** for easy assembly on site
- Exceeds ANSI/TIA 568-C.2 standard, and supports 1000-BASE-T
- 1U Patch Panel to mount In any Standard Rack
- Plug Insertion Life : >= 750 Cycles with FCC Compliant RJ-45 Plug



Consists of a total of 5 plants covering 140,000 Sq ft of production shop floor area with SMT and Through-hole Lines

# Channel Structured Cabling

## COPPER PATCH PANELS

### CAT6A UTP, 24 PORT, 90° PATCH PANEL

- 90 Degree (Top Entry) Punch Down Design
- Built in Rear Cable Management
- 6x4 Module Specially Designed Jack Configuration
- 1U Patch Panel to Mount in any Standard Rack
- Easy Port Labeling Identification Provision
- Accommodates 22~26 AWG Stranded and Solid Wires



### CAT6A UTP, 24 PORT, 180° PATCH PANEL

- 180 Degree Punch Down Design
- 1U Patch Panel to Mount in any Standard Rack
- Easy Port Labeling Identification Provision
- Accommodates 22~26 AWG Stranded and Solid Wires



### CAT6A FTP, 24 PORT, 90° PATCH PANEL

- 90 Degree (Top Entry) Punch Down Design
- Removable Module Design
- 8x3 Module Specially Designed Jack Configuration
- 1U Patch Panel to Mount in any Standard Rack
- Easy Port Labeling Identification Provision
- Accommodates 22~26 AWG Stranded and Solid Wires



### CAT6 UTP, 24 PORT, 90° PATCH PANEL

- 90 Degree (Top Entry) Punch Down Design
- Built in Rear Cable Management
- 6x4 Module Specially Designed Jack Configuration
- 1U Patch Panel to Mount in any Standard Rack
- Easy Port Labeling Identification Provision
- Accommodates 22~26 AWG Stranded and Solid Wires



### CAT6 UTP, 24 PORT, 180° PATCH PANEL

- 180 Degree Punch Down Design
- 1U Patch Panel to Mount in any Standard Rack
- Easy Port Labeling Identification Provision
- Accommodates 22~26 AWG Stranded and Solid Wires



### CAT6 FTP, 24 PORT, 90° PATCH PANEL

- 90 Degree (Top Entry) Punch Down Design
- Removable Module Design
- 8x3 Module Specially Designed Jack Configuration
- 1U Patch Panel to Mount in any Standard Rack
- Easy Port Labeling Identification Provision
- Accommodates 22~26 AWG Stranded and Solid Wires



Process Capability of Manufacturing of RoHS Products

# Channel Structured Cabling

## COPPER PATCH PANELS

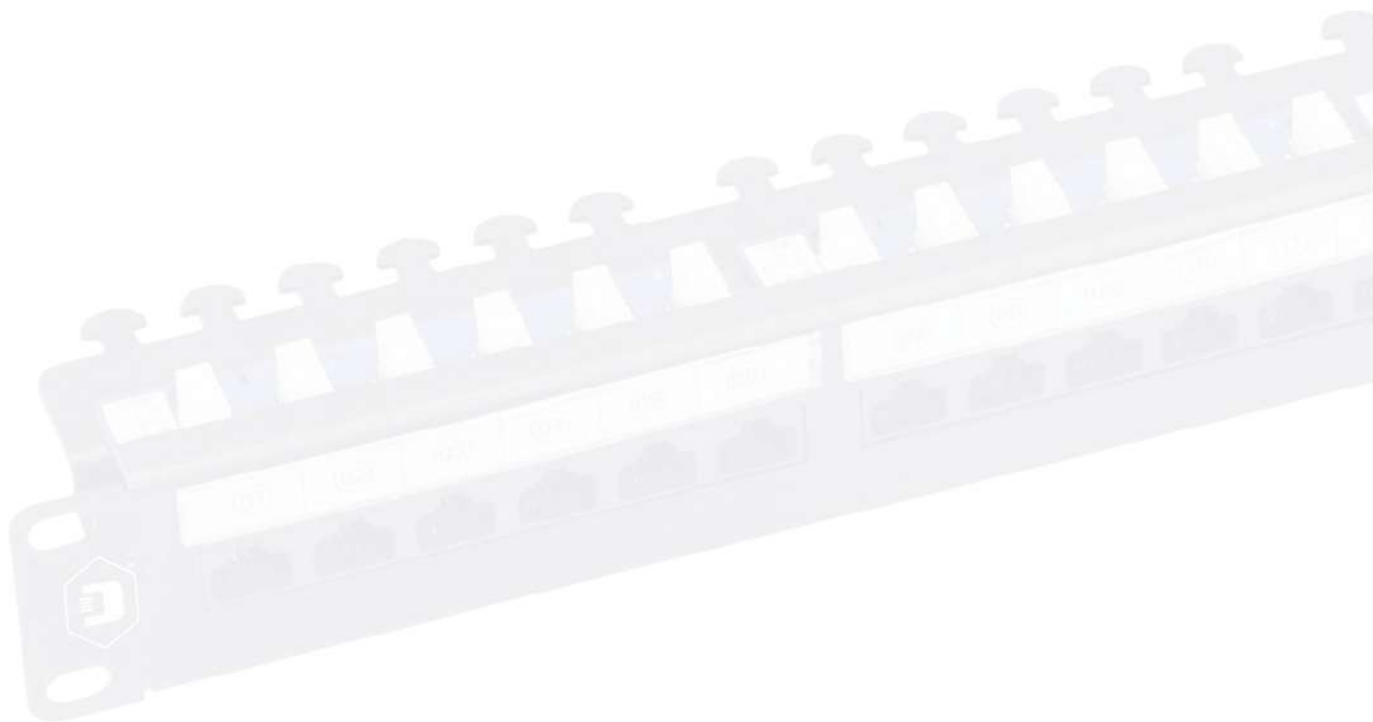
### CAT5E UTP, 24 PORT, 90° PATCH PANEL

- 90 Degree (Top Entry) Punch Down Design
- Built in Rear Cable Management
- 6x4 Module Specially Designed Jack Configuration
- 1U Patch Panel to Mount in any Standard Rack
- Easy Port Labeling Identification Provision
- Accommodates 22~26 AWG Stranded and Solid Wires



### CAT5E UTP, 24 PORT, 180° PATCH PANEL

- 180 Degree Punch Down Design
- 1U Patch Panel to Mount in any Standard Rack
- Easy Port Labeling Identification Provision
- Accommodates 22~26 AWG Stranded and Solid Wires



Statistical Quality Assurance

# Channel Structured Cabling

## COPPER PATCH CORDS

### CAT6A UTP, LSZH PATCH CORD

- Available in LSZH Sheath  
Jacket-Reduced Toxic Gasses  
Emitted During Combustion
- RJ45, 8P8C, 2 FORK 50µ" Gold Plated Contacts
- 100% Factory Tested
- Transparent Boot Cable Assemblies



### CAT6A STP, LSZH PATCH CORD

- Available in LSZH Sheath  
Jacket- Reduced Toxic Gasses  
Emitted During Combustion
- RJ45, 8P8C, 2 Fork 50µ" Gold Plated Contacts
- 100% Factory Tested
- Shielded Plug Boot Cable Assemblies
- Provides Better Mechanical Properties



### CAT6 UTP, LSZH PATCH CORD

- Available in LSZH Sheath  
Jacket-Reduced Toxic Gasses  
Emitted During Combustion
- RJ45, 8P8C, 2 FORK 50µ" Gold Plated Contacts
- 100% Factory Tested
- Transparent Boot Cable Assemblies
- Available Colors:  
Grey, Blue, Green, Yellow, Orange, Red



### CAT6 STP, LSZH PATCH CORD

- Available in LSZH Sheath  
Jacket- Reduced Toxic Gasses  
Emitted During Combustion
- RJ45, 8P8C, 2 Fork 50µ" Gold Plated Contacts
- 100% Factory Tested
- Shielded Plug Boot Cable Assemblies
- Provides Better Mechanical Properties



### CAT5E UTP, LSZH PATCH CORD

- Available in LSZH Sheath  
Jacket- Reduced Toxic Gasses  
Emitted During Combustion
- RJ45, 8P8C, 2 FORK 50µ" Gold Plated Contacts
- 100% Factory Tested
- Transparent Boot Cable Assemblies



### CAT5E STP, LSZH PATCH CORD

- Available in LSZH Sheath  
Jacket- Reduced Toxic Gasses  
Emitted During Combustion
- RJ45, 8P8C, 2 Fork 50µ" Gold Plated Contacts
- 100% Factory Tested
- Shielded Plug Boot Cable Assemblies
- Provides Better Mechanical Properties



3 Decades of experience in manufacturing



# Channel Structured Cabling

## COPPER UNLOADED FACE PLATE

### TWO PIECE SINGLE PORT, FACE PLATE MODULAR STRAIGHT SHUTTERED

- Two Piece design
- Shutter on Face Plate
- Elegant hidden-screw design
- Made In India



### TWO PIECE DUAL PORT, FACE PLATE MODULAR STRAIGHT SHUTTERED

- Two Piece design
- Shutter on Face Plate
- Elegant hidden-screw design
- Made In India



### TWO PIECE QUAD PORT, FACE PLATE MODULAR STRAIGHT SHUTTERED

- Two Piece design
- Shutter on Face Plate
- Elegant hidden-screw design
- Made In India



### ONE PIECE SINGLE PORT, FACE PLATE

- One Piece design
- Screw caps to hide screws
- Made In India



### ONE PIECE DUAL PORT, FACE PLATE

- One Piece design
- Screw caps to hide screws
- Made In India



### ONE PIECE QUAD PORT, FACE PLATE

- One Piece design
- Screw caps to hide screws
- Made In India



The plants are ISO 9001:2008, AS 9100:2009 and ISO 14001:2004 certified

# Channel Structured Cabling

## COPPER UNLOADED PATCH PANEL & SURFACE MOUNT BOX

### UNLOADED UTP, 24 PORT, PATCH PANEL

- Front Removable Module Design
- 1U Patch Panel to Mount in any Standard Rack
- Easy Port Labeling Identification Provision
- Accommodates 22~26 AWG Stranded and Solid Wires



### UNLOADED UTP, 24 PORT, ANGLED BLANK PATCH PANEL

- Front Removable Module Design
- 1U Patch Panel to Mount in any Standard Rack
- Easy Port Labeling Identification Provision
- Accommodates 22~26 AWG Stranded and Solid Wires
- Compatible with Standard Sized Keystone Jacks



### UNLOADED SURFACE MOUNT BOX

- Robust and installer friendly design
- Secure and protect your wire with our durable wall box
- Easy to install



### UNLOADED SURFACE MOUNT BOX, CONCEALED TYPE

- Robust and installer friendly design
- Secure and protect your wire with our durable wall box
- Easy to install
- Concealed Type



## COPPER TOOLS

### TOOL CABLE STRIPPER WITH CUTTER FOR LAN (UTP/STP)

- Light weight, compact stripper, simple to operate
- Strips UTP /STP wire and multi conductor cable dimension
- Uses adjustable knob for setting different insulation diameters
- Provides with cable cutting function



### TOOL IMPACT TOOL WITH BLADES FOR 110 & KRONE IDC

- Impact Tool with interchangeable blades
- 110, 66 Block and Krone/ADC for mats and blades
- User adjustable impact force with dial in the handle
- Extra Blade Storage in handle
- Heavy Duty



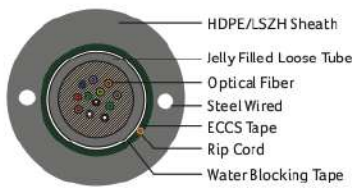
Consists of a total of 5 plants covering 140,000 Sq ft of production shop floor area with SMT and Through-hole Lines

# Channel Structured Cabling

## FIBER CABLES

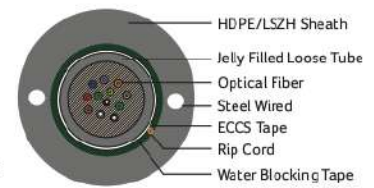
### UNITUBE SINGLE MODE ARMoured CABLE

- Suitable for Outdoor Network Direct Burial
- Polyester based yarns below Armour tape for easy ripping
- Thermoplastic Material Tube
- Excellent Water Proof Layer and Moisture Resistance
- Excellent Crush Resistance Performance



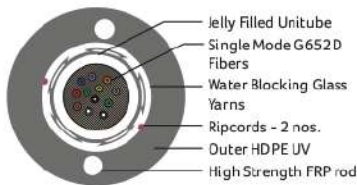
### UNITUBE MULTI-MODE ARMoured CABLE

- Suitable for Outdoor Network Direct Burial
- Polyester based yarns below Armour tape for easy ripping
- Thermoplastic Material Tube
- Excellent Water Proof Layer and Moisture Resistance
- Excellent Crush Resistance Performance



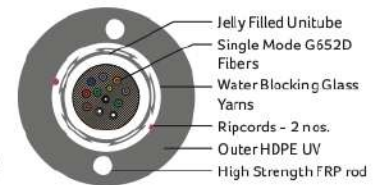
### UNITUBE SINGLE MODE UN-ARMoured CABLE

- Suitable for Outdoor Network Direct Burial
- Un-Armoured design with High Strength FRP's & Glass Rovings
- Thermoplastic Material Tube
- Excellent Water Proof Layer and Moisture Resistance
- Excellent Crush Resistance Performance



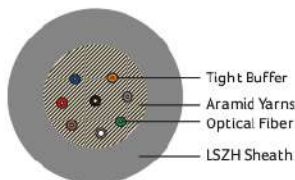
### UNITUBE MULTI-MODE UN-ARMoured CABLE

- Suitable for Outdoor Network Direct Burial
- Un-Armoured design with High Strength FRP's & Glass Rovings
- Thermoplastic Material Tube
- Excellent Water Proof Layer and Moisture Resistance
- Excellent Crush Resistance Performance



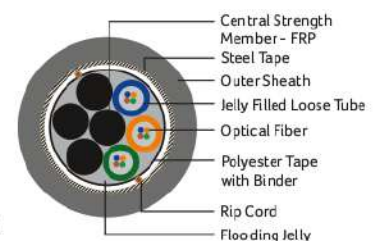
### TIGHT-BUFFERED SINGLE MODE AND MULTI-MODE CABLE

- Suitable for aerial, Pipeline, Bracket Lying
- Suitable for Indoor and Outdoor Applications
- All Dielectric self supporting ADSS
- Polyester based yarns tape for easy ripping
- Excellent Crush Resistance Performance



### MULTI-TUBE SINGLE SHEATH ARMoured CABLE

- Suitable for Outdoor Network Direct Burial
- Polyester based yarns below Armour tape for easy ripping
- Thermoplastic Material Tube
- Core covering Polyester Binder and Polyester tape
- Excellent Water Proof Layer and Moisture Resistance
- Excellent Crush Resistance Performance



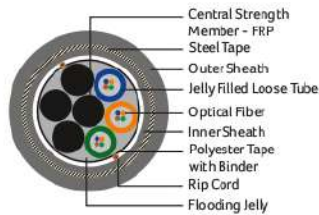
Process Capability of Manufacturing of RoHS Products

# Channel Structured Cabling

## FIBER CABLES

### MULTI-TUBE DOUBLE SHEATH ARMoured CABLE

- Suitable for Outdoor Network Direct Burial
- Polyester based yarns below Armour tape for easy ripping
- Thermoplastic Material Tube
- Core covering Polyester Binder and Polyester tape
- Excellent Water Proof Layer and Moisture Resistance
- Excellent Crush Resistance Performance



Statistical Quality Assurance

# Channel Structured Cabling

## FIBER PATCH CORD AND PIGTAIL

### PATCH CORD SINGLE MODE, LSZH

- LSZH Jacket-Reduced Toxic Gasses Emitted During Combustion
- 100% Factory Tested
- Available with Corning Fiber
- Available in PC/APC Type Options
- High Precision Ceramic Ferrule with Good Concentricity
- Available in Simplex and Duplex Modes



### PATCH CORD MULTI-MODE, LSZH

- LSZH Jacket-Reduced Toxic Gasses Emitted During Combustion
- 100% Factory Tested
- Available with Corning Fiber
- Available in PC/APC Type Options
- High Precision Ceramic Ferrule with Good Concentricity
- Available in Simplex and Duplex Modes



### PIGTAILS SINGLE MODE AND MULTI-MODE, LSZH

- LSZH Jacket-Reduced Toxic Gasses Emitted During Combustion
- 100% Factory Tested
- Low Insertion Loss and Return Loss
- Available with Corning Fiber
- Available in PC/APC Type Options
- High Precision Ceramic Ferrule with Good Concentricity



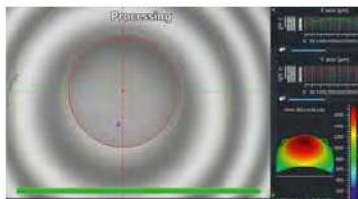
### Three Level Testing

DIGISOL Fiber Patch Cords and Pigtails go through 100% testing which include three levels as shown below:

#### LEVEL ONE Visual inspection for scratch measurement



#### LEVEL TWO Interferometry Test



#### LEVEL THREE Optical Test

1. Insertion Loss measurement
2. Return Loss measurement

3 Decades of experience in manufacturing

# Channel Structured Cabling

## FIBER LIU AND ADAPTERS

### DRAWER LIU TYPE

- Available in Standard 19"
- Cold Rolled Steel as Raw Material
- Consist of Top Cover and Bottom Panel
- Easy to Assemble and Dissemble
- Three Types of Input Holes
- Cable Entry Through Water Proof Cable Clamp
- 24 Simplex SC or 12 Duplex LC Adapter Interface
- Splice 24 Fibers at Most with 1 Tray



### WALLMOUNT FIBER LIU TYPE

- Cold Rolled Steel as Raw Material
- Consist of Top Cover & Bottom Panel
- Easy to Assemble and Dissemble
- Three Types of Input Holes
- Cable Entry Through Water Proof Cable Clamp
- 12 Duplex SC or LC Adapter Interface
- Patch Cord with Bend Radius Guides
- Minimize Macro Bending



### ADAPTERS FC TYPE

- Compact Design
- Telcordia GR-326-Core
- RoHS Compliance
- Low Insertion and Return Loss
- Self Adjusting Metal Panel Clips
- Available in Flange Mount or D Hole Mount Adapter Styles
- Available in Simplex and Duplex Types



### ADAPTERS LC TYPE

- Small Footprint
- Telcordia GR-326-Core
- RoHS Compliance
- Low Insertion and Return Loss
- Self Adjusting Metal Panel Clips
- Available in Simplex and Duplex Types



### ADAPTERS SC TYPE

- Compact Design
- Telcordia GR-326-Core
- RoHS Compliance
- Low Insertion and Return Loss
- Available In Simplex and Duplex Types



### ADAPTERS ST TYPE

- Compact Design
- Telcordia GR-326-Core
- RoHS Compliance
- Low Insertion and Return Loss
- Choice of Flange Options
- Self Adjusting Metal Panel Clips



The plants are ISO 9001:2008, AS 9100:2009 and ISO 14001:2004 certified

# Channel Structured Cabling

## FTTH SMC, ODF AND SPLITTERS

### SMC FIBER OPTIC

- Fiber Management Structure adopts unique splice and distribution design for fiber cable and pigtail
- Frame adopts front side cable operation, saves installation space
- Movable connection of pigtail and patch cords can be finished in the same fiber management tray
- Movable connectors adopts inclined 25 degree installation structure ensures bend radius of pigtail and patch cord
- Front panels suitable for FC, SC, ST adapter



### ODF OPTICAL DISTRIBUTION FRAME FTTH

- Fiber Management Structure adopts unique splice and distribution design for fiber cable and pigtail
- Frame adopts front side cable operation, saves installation space
- Movable connection of pigtail and patch cords can be finished in the same fiber management tray
- Movable connectors adopts inclined 25 degree installation structure ensures bend radius of pigtail and patch cord
- Front panels suitable for FC, SC, ST adapter



### FTTH SPLITTERS, RACK TYPE

- Low insertion loss
- Low Polarization Dependent Loss
- High Reliability
- Wide wavelength range
- High Return Loss and good Repeatability
- Excellent channel to channel uniformity
- Excellent Environmental Stability
- Excellent Mechanical Stability
- Telcordia GR-1221 and GR-1209



### FTTH SPLITTERS, DRAWER TYPE

- Low insertion loss, Low POL and High reliability
- High return loss and Good repeatability
- Wide wavelength range
- Excellent channel-to-channel uniformity



### FTTH SPLITTERS, BOX TYPE

- Low Polarization Dependent Loss
- Low insertion loss
- High Reliability
- Wide wavelength range
- High Return Loss and good Repeatability
- Excellent channel to channel uniformity
- Excellent Environmental Stability
- Excellent Mechanical Stability
- Telcordia GR-1221 and GR-1209



### FTTH SPLITTERS, TUBE TYPE

- Low insertion loss
- High Reliability
- Low Polarization Dependent Loss
- High Return Loss and good Repeatability
- Wide wavelength range
- Excellent channel to channel uniformity
- Excellent Environmental Stability
- Excellent Mechanical Stability
- Telcordia GR-1221 and GR-1209



Consists of a total of 5 plants covering 140,000 Sq ft of production shop floor area with SMT and Through-hole Lines

# Channel Structured Cabling

## FTTH FIBER DISTRIBUTION BOX, CONNECTORS, OUTLET & DROP CABLE

### FDB FTTH FIBER DISTRIBUTION BOX, 6 CORE

- Full Enclosed & Ergonomic Design
- Meets IP65 Grade for wet-proof, water-proof and anti aging
- Hinged Splice tray for easy installation and maintenance
- Feeder cable and Drop cable fixation, Fiber Splicing, Storage and Distribution
- Separate cable pathway design
- Modular adapter holder design
- Wall Mounted or Pole mounted
- Suitable for Indoor and Outdoor Use



### FDB FTTH FIBER DISTRIBUTION BOX, 8 CORE

- Full Enclosed & Ergonomic Design
- Meets IP65 Grade for wet-proof, water-proof and anti aging
- Feeder cable and Drop cable fixation, Fiber Splicing, Storage and Distribution
- Separate cable pathway design
- Modular adapter holder design
- Hinged Splice tray for easy installation and maintenance
- Wall Mounted or Pole mounted
- Suitable for Indoor and Outdoor Use



### FDB FTTH FIBER DISTRIBUTION BOX, 12 CORE

- Full Enclosed & Ergonomic Design
- Meets IP65 Grade for wet-proof, water-proof and anti aging
- Feeder cable and Drop cable fixation, Fiber Splicing, Storage and Distribution
- Separate cable pathway design
- Modular adapter holder design
- Hinged Splice tray for easy installation and maintenance
- Wall Mounted or Pole mounted
- Suitable for Indoor and Outdoor Use



### FIELD ASSEMBLY CONNECTORS, FIBER OPTIC

- Industry leading double V groove alignment clamping mechanism
- User friendly and cost effective
- Superior qualified standard PC, APC, UPC polishing
- Reliable and superior optical performance
- Good exchange ability and good reliability
- No electricity required
- Cable tensile test complies with GR-326-CORE
- No epoxy and polishing required
- Only three pre-assembly parts



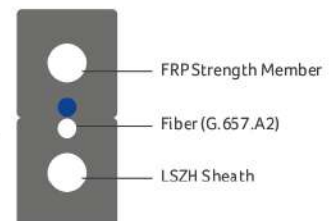
### FTTH OUTLET, BOX TYPE

- Indoor FTTH and Fiber Optic CATV Application
- Inner tray for splice sleeve
- Compact design
- Available with SC Simplex or LC Duplex
- All Modules are solderless mode



### DROP CABLE, FTTH

- Simple Structure
- Light Weight
- Novel Groove Design
- Easily Strip and Splice
- High Tensile Strength and Metal Free
- Simplified Installation and Maintenance
- LSZH and Flame Retardant Sheath
- Environment Friendly and Good Safety



Process Capability of Manufacturing of RoHS Products



## DIGISOL'S OFFERING

A wide range of products and solutions across the IT networking spectrum that include

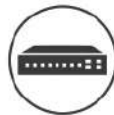
### DIGISOL's offerings



Structured Cabling Systems



FTTH Solutions



Switching Solutions



Wireless Solutions

### Value Addition



Cash Karo  
(Loyalty Program)



Service Support



Digisol Institute of  
Technical Training

More details on [www.digisol.com](http://www.digisol.com)

#### AUTHORIZED DEALER

LINKWELL TELECOM SERVICES.  
1/4, Puranik Building, Near Old Post Office,  
Panvel, Navi Mumbai, Maharashtra, India-410 206.  
Tel. No. : 022-27462199.  
[www.linkwelltelecom.com](http://www.linkwelltelecom.com)